

GRAND TWO DEPARTURE (OBSTACLE)

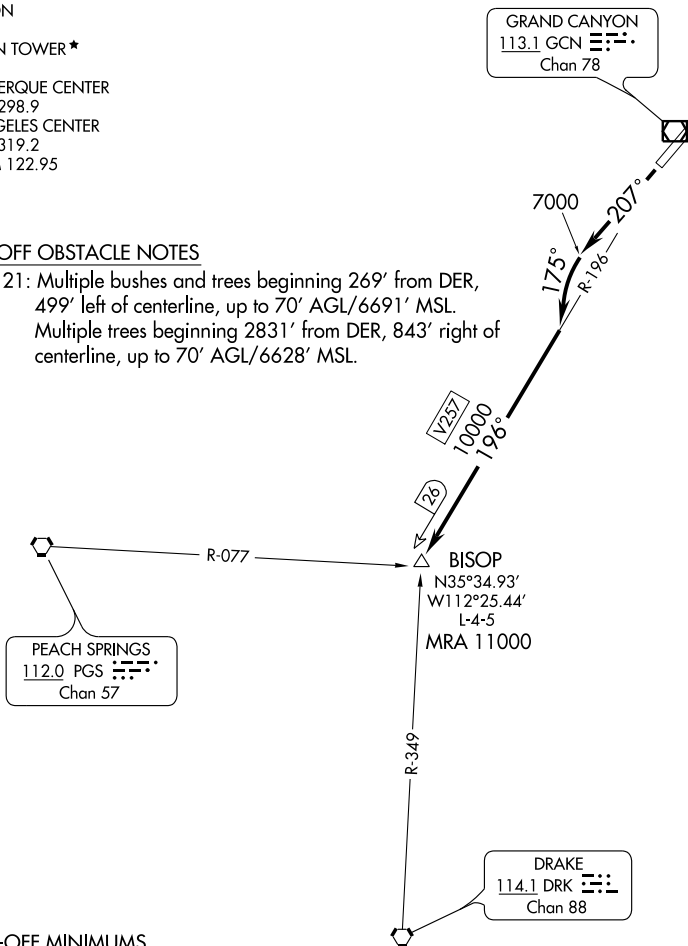
ATIS 124.3
GND CON
121.9
CANYON TOWER ★
119.0
ALBUQUERQUE CENTER
128.45 298.9
LOS ANGELES CENTER
124.85 319.2
UNICOM 122.95

GRAND CANYON
113.1 GCN
Chan 78

TAKEOFF OBSTACLE NOTES

RWY 21: Multiple bushes and trees beginning 269' from DER, 499' left of centerline, up to 70' AGL/6691' MSL.
Multiple trees beginning 2831' from DER, 843' right of centerline, up to 70' AGL/6628' MSL.

SW-4, 30 AUG 2007 to 27 SEP 2007



SW-4, 30 AUG 2007 to 27 SEP 2007

TAKE-OFF MINIMUMS

Rwy 3, NA.
Rwy 21: 200-1¼ or standard with minimum climb of 234' per NM to 7000', or alternatively, with standard takeoff minimums and normal 200 feet/NM climb gradient, takeoff must occur no later than 1800 feet prior to departure end of runway.

NOTE: Chart not to scale.



DEPARTURE ROUTE DESCRIPTION

TAKE-OFF RUNWAY 3: NA.

TAKE-OFF RUNWAY 21: Climb heading 207° to 7000', then turn left heading 175° to intercept GCN R-196 to BISOP INT. Expect filed altitude 10 minutes after departure.

GRAND TWO DEPARTURE (OBSTACLE)