

LOOP FIVE DEPARTURE

SL-237 (FAA)

LOS ANGELES INTL (LAX)
LOS ANGELES, CALIFORNIA

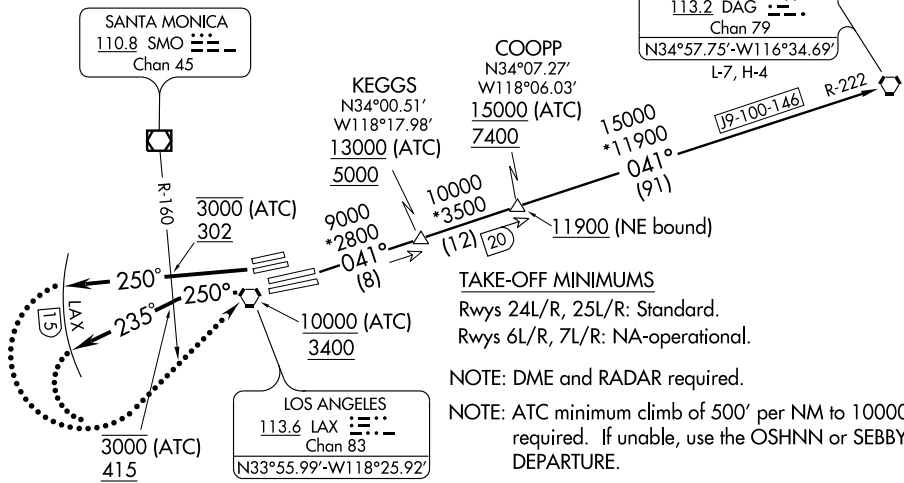
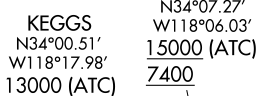
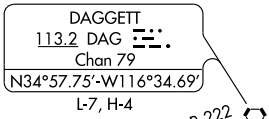
ATIS DEP 135.65
 CLNC DEL
 121.4 327.0
 GND CON
 N 121.65 327.0
 S 121.75 327.0
 LOS ANGELES TOWER
 N 133.9 239.3
 S 120.95 379.1
 SOCIAL DEP CON
 124.3 363.2 (045°-224°)
 125.2 263.025 (225°-044°)

TAKE-OFF OBSTACLE NOTES

Rwy 24L: Bush 956' from DER, 600' left of centerline, 40' AGL/148' MSL.
 Light poles beginning 273' from DER, 425' left of centerline, up to 10' AGL/120' MSL.
 Antenna on pole 1357' from DER 286' right of centerline, 36' AGL/144' MSL.
 Light poles and bushes beginning 239' from DER, 321' right of centerline, up to 8' AGL/116' MSL.

Rwy 24R: OL on GS 212' from DER, 399' left of centerline, 39' AGL/151' MSL.

Rwy 25L: Tree and pole beginning 2366' from DER, 764' left of centerline, up to 80' AGL/197' MSL.
 Transmission towers beginning 2800' from DER, 926' left of centerline, up to 71' AGL/192' MSL.
 Bush 133' from DER, 397' left of centerline, 4' AGL/123' MSL.



TAKE-OFF MINIMUMS
 Rwys 24L/R, 25L/R: Standard.
 Rwys 6L/R, 7L/R: NA-operational.

NOTE: DME and RADAR required.

NOTE: ATC minimum climb of 500' per NM to 10000 required. If unable, use the OSHNN or SEBBY DEPARTURE.

NOTE: Use OSHNN or SEBBY DEPARTURE during the period 2100-0700 local time in lieu of the LOOP DEPARTURE.

NOTE: Chart not to scale.

DEPARTURE ROUTE DESCRIPTION

TAKE-OFF RUNWAYS 24L/R: Climb via heading 250° to cross SMO VOR/DME R-160 at or below 3000 (ATC)/302, expect radar vectors to cross LAX VORTAC at or above 10000 (ATC)/3400. Thence....

TAKE-OFF RUNWAYS 25L/R: Climb heading 250° to cross SMO VOR/DME R-160 at or below 3000 (ATC)/415, then turn left heading 235° expect radar vectors to cross LAX VORTAC at or above 10000 (ATC)/3400. Thence....

.... via (assigned transition) or (assigned route). All aircraft expect further clearance to filed flight level three minutes after departure.

LOST COMMUNICATIONS: If not in contact with Departure Control by 15 DME west of LAX VORTAC, turn left and proceed direct LAX VORTAC, climb to FL230 or filed altitude whichever is lower, and when able proceed via filed or assigned route/fix/transition. Aircraft filing FL240 or above climb to filed altitude ten minutes after departure.

DAGGETT TRANSITION (LOOP5.DAG): From over LAX VORTAC via LAX R-041 and DAG R-222 to DAG VORTAC.

LOOP FIVE DEPARTURE

SW-3, 29 JUL 2010 to 26 AUG 2010

SW-3, 29 JUL 2010 to 26 AUG 2010