

SEBBY FIVE DEPARTURE

SL-237 (FAA)

LOS ANGELES INTL (LAX)
LOS ANGELES, CALIFORNIA

ATIS DEP 135.65
 CLNC DEL
 121.4 327.0
 GND CON
 N 121.65 327.0
 S 121.75 327.0
 LOS ANGELES TOWER
 N 133.9 239.3
 S 120.95 379.1
 SOCAL DEP CON
 124.3 363.2 (045°-224°)
 125.2 263.025 (225°-044°)

NOTE: This departure to be used only if unable to use the LOOP DEPARTURE.
 NOTE: DME and RADAR required.
 NOTE: Rwy 25L/R, ATC minimum climb of 410 feet per NM to 600 required.

TAKE-OFF MINIMUMS

Rwys 6L/R, 7L/R: NA- operational.
 Rwys 24L/R, 25L/R: Standard.

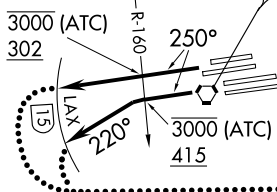
DAGGETT
 113.2 DAG Chan 79
 N34°57.75'-W116°34.69'
 L-7, H-4

SANTA MONICA
 110.8 SMO Chan 45

LOS ANGELES
 113.6 LAX Chan 83

SEBBY
 N34°05.38'
 W117°46.62'
 16000 (ATC)
 9500

SEAL BEACH
 115.7 SLI Chan 104
 N33°47.00'-W118°03.29'



10000 (ATC)
 4900

TAKE-OFF OBSTACLE NOTES

- Rwy 24L: Bush 956' from DER, 600' left of centerline, 40' AGL/148' MSL. Light poles beginning 273' from DER, 425' left of centerline, up to 10' AGL/120' MSL. Antenna on pole 1357' from DER 286' right of centerline, 36' AGL/144' MSL. Light poles and bushes beginning 239' from DER, 321' right of centerline, up to 8' AGL/116' MSL.
- Rwy 24R: OL on GS 212' from DER, 399' left of centerline, 39' AGL/151' MSL.
- Rwy 25L: Tree and pole beginning 2366' from DER, 764' left of centerline, up to 80' AGL/197' MSL. Transmission towers beginning 2800' from DER, 926' left of centerline, up to 71' AGL/192' MSL. Bush 133' from DER, 397' left of centerline, 4' AGL/123' MSL.

NOTE: Chart not to scale.

DEPARTURE ROUTE DESCRIPTION

TAKE-OFF RUNWAYS 24L/R: Climb on heading 250°, to cross SMO VOR/DME R-160 at or below 3000 (ATC)/302, Thence....

TAKE-OFF RUNWAYS 25L/R: Climb on heading 250°, to cross SMO VOR/DME R-160 at or below 3000 (ATC)/415, then turn left heading 220°, Thence....

....Expect radar vectors to cross SLI VORTAC at or above 10000 (ATC)/4900, then on SLI R-022 to cross SEBBY/23 DME fix at or above 16000 (ATC)/9500, then on DAG R-214 to DAG VORTAC. All aircraft expect further clearance to filed flight level three minutes after departure.

LOST COMMUNICATIONS: If not in contact with departure control by 15 DME west of LAX VORTAC, turn left direct SLI VORTAC and proceed on assigned route, climb to FL230 or filed altitude whichever is lower. Aircraft filing FL240 or above climb to filed altitude ten minutes after departure.

SEBBY FIVE DEPARTURE

SW-3, 29 JUL 2010 to 26 AUG 2010

SW-3, 29 JUL 2010 to 26 AUG 2010