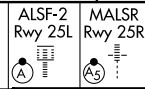


# ILS or LOC RWY 25L

LOS ANGELES INTL (LAX)

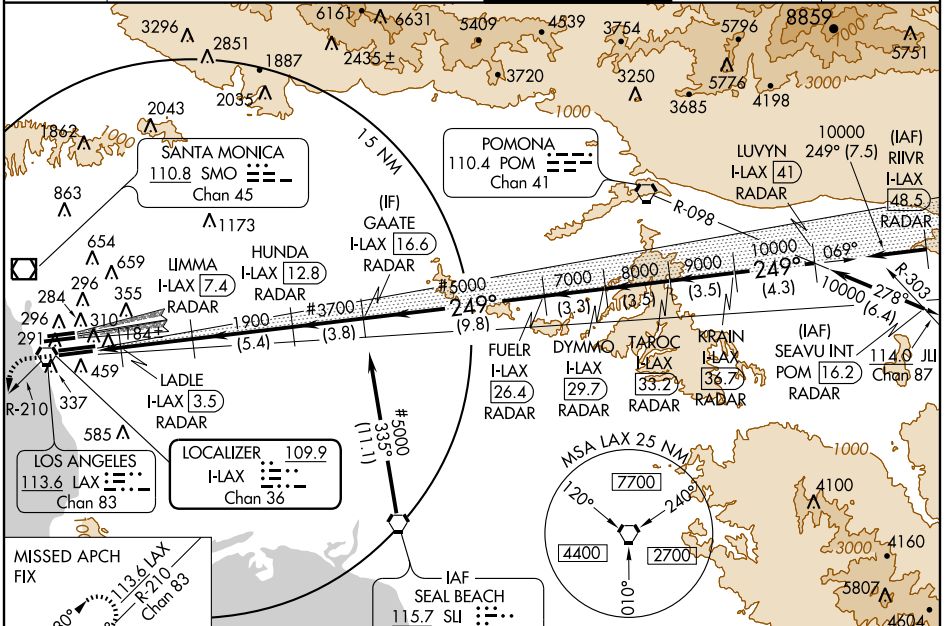
LOC/DME I-LAX <b>109.9</b> Chan <b>36</b>	APP CRS <b>249°</b>	Rwy Idg 25L <b>11095</b> TDZE <b>104</b> Apt Elev <b>126</b>	Rwy Idg 25R <b>11134</b> TDZE <b>102</b> Apt Elev <b>126</b>
---	------------------------	--	--

**▼** Inoperative table does not apply to Sidestep Rwy 25R  
Cats. A and B.  
Simultaneous approach authorized with Rwy 24L/R.  
LOC procedure NA during simultaneous operations.



**MISSED APPROACH:** Climb to 800 then climbing left turn to 2000 via heading 190° and LAX VORTAC R-210 to CATLY INT/ LAX 12.8 DME and hold.

ATIS ARR <b>133.8</b> DEP <b>135.65</b>	<b>124.3 363.2</b> (ARCH FM WEST)	SOCAL APP CON <b>124.9 269.0</b> <b>128.5 360.7</b> (050°-224°) (045°-089°)	LOS ANGELES TOWER <b>N 133.9 239.3</b> <b>S 120.95 379.1</b>	GND CON <b>N 121.65 327.0</b> <b>S 121.75 327.0</b>	CLNC DEL <b>121.4 327.0</b>
---	--------------------------------------	---	--	---	--------------------------------

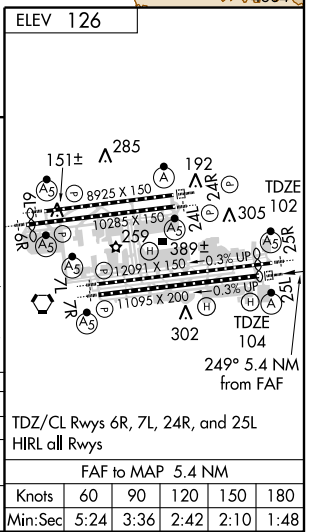


SW-3, 27 AUG 2009 to 24 SEP 2009

SW-3, 27 AUG 2009 to 24 SEP 2009

Procedure NA for arrivals at SLI VORTAC via V459-597 southbound.  
**DME or RADAR REQUIRED**

800	2000	LAX	CATLY INT LAX	# When assigned by ATC, intercept glidepath at 3700 or 5000.			
190°	R-210	113.6	12.8	*LOC only			
Procedure	LIMMA	HUNDA	GAATE	FUELR	TAROC	KRAIN	LUVYN
Turn	LADLE	I-LAX	I-LAX	I-LAX	I-LAX	I-LAX	I-LAX
NA	I-LAX	I-LAX	I-LAX	I-LAX	RADAR	RADAR	RADAR
	3.5	7.4	12.8	16.6	29.7	33.2	36.7
	RADAR	RADAR	RADAR	RADAR	RADAR	RADAR	RADAR
	1900	3700#	5000#	7000	8000	9000	10000
	1.5 NM	3.9 NM	5.4 NM	3.8 NM	9.8 NM	3.3 NM	3.5 NM
CATEGORY	A		B		C		D
S-ILS 25L	304/18		200 (200-1/2)				
S-LOC 25L	540/24		436 (500-1/2)		540/40		540/50
SIDESTEP RWY 25R	620/50		518 (500-1)		436 (500-3/4)		436 (500-1)
					620-1 1/2		518 (500-1 1/2)



TDZ/CL Rwy 6R, 7L, 24R, and 25L					
HIRL all Rwy					
FAY to MAP 5.4 NM					
Knots	60	90	120	150	180
Min:Sec	5:24	3:36	2:42	2:10	1:48