

VOR or TACAN-A

SAN LUIS COUNTY RGNL (SBP)

VORTAC MQO 112.4 Chan 71	APP CRS 084°	Rwy ldg TDZE Apt Elev	N/A N/A 209
---------------------------------------	------------------------	-----------------------------	--

⚠ Circling NA north of Rwy 11-29.

⚠ MISSED APPROACH: Climbing right turn to 3100 via heading 175° and MQO R-126 to MQO VORTAC and hold. (TACAN Aircraft continue climb to 4000 via MQO R-292 to FRAMS 11.2 DME and hold east, right turns, 292° inbound.)

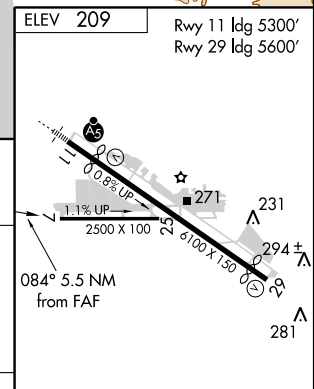
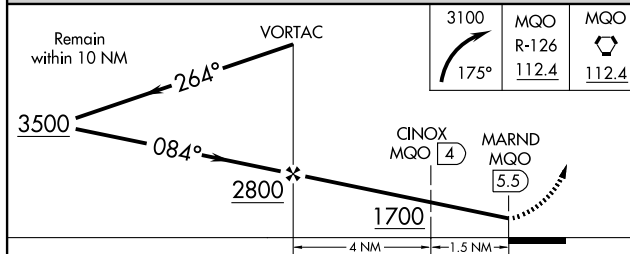
ATIS 120.6	SANTA BARBARA APP CON* 127.725 244.575	SAN LUIS TOWER* 124.0 (CTAF) 0 379.9	GND CON 121.6	UNICOM 122.95
----------------------	--	---	-------------------------	-------------------------



SW-3, 20 DEC 2007 to 17 JAN 2008

SW-3, 20 DEC 2007 to 17 JAN 2008

ELEV 209	Rwy 11 ldg 5300'	Rwy 29 ldg 5600'
----------	------------------	------------------



CATEGORY	A	B	C	D
CIRCLING	1700-1¼ 1491 (1500-1¼)	1700-1½ 1491 (1500-1½)	1700-3	1491 (1500-3)
TACAN OR DME MINIMA				
CIRCLING	1120-1¼ 911 (1000-1¼)		1160-2¾ 951 (1000-2¾)	1280-3 1071 (1100-3)

FAF to MAP 5.5 NM					
Knots	60	90	120	150	180
Min:Sec	5:30	3:40	2:45	2:12	1:50