

# RNAV (GPS) Z RWY 18

APPLE VALLEY (APV)

WAAS Ch <b>63102</b> <b>W18A</b>	APP CRS <b>182°</b>	Rwy Idg TDZE Apt Elev	<b>6498</b> <b>3062</b> <b>3062</b>
--	------------------------	-----------------------------	---

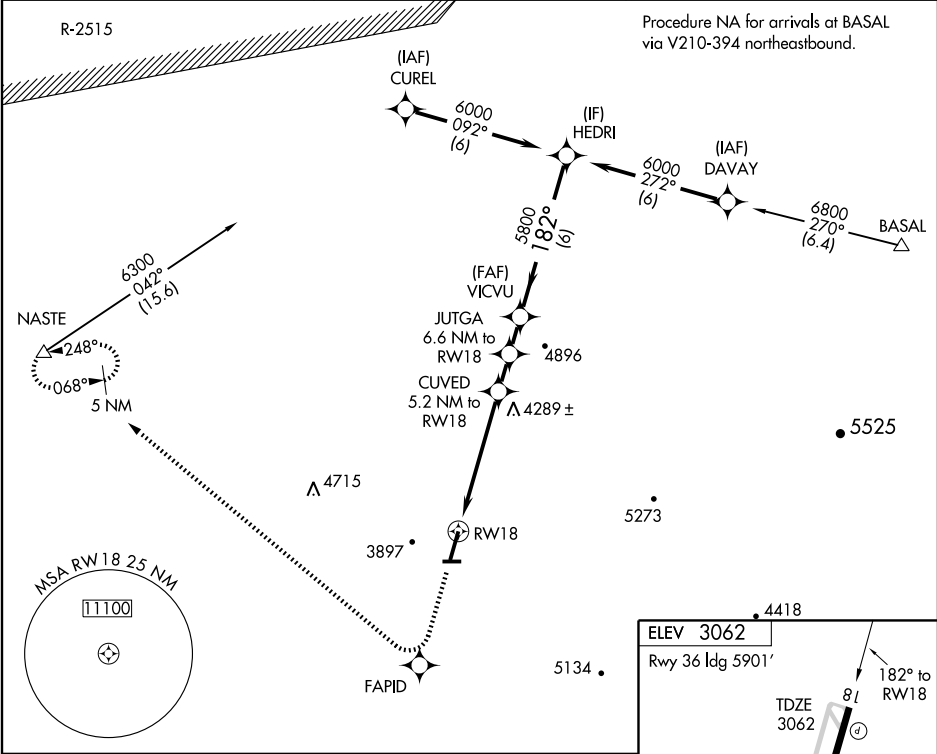
**▼** Circling to Rwy 8 and 26 NA at night.  
DME/DME RNP-0.3 NA.  
**▲** NA Visibility reduction by helicopters NA.  
**W** Use Southern California Logistics altimeter setting; if not received, procedure NA.

**MISSED APPROACH:** Climb to 6000 direct FAPID and right turn via 296° track to NASTE and hold.

SOUTHERN CALIFORNIA LOGISTICS  
AWOS-3  
**109.4**

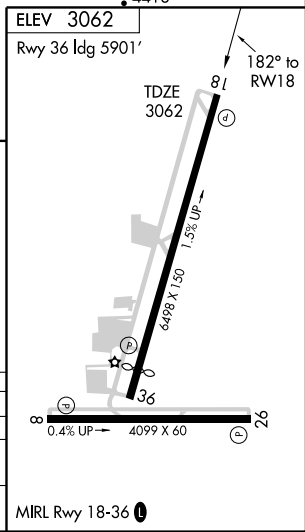
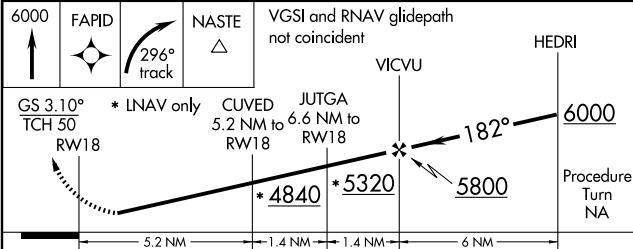
JOSHUA APP CON  
**124.55 363.0**

UNICOM  
**122.8 (CTAF) 0**



SW-3, 18 JAN 2007 to 15 FEB 2007

SW-3, 18 JAN 2007 to 15 FEB 2007



CATEGORY	A	B	C	D
LPV DA	3439-1¼		377 (400-1¼)	
LNAV MDA	4600-1¼ 1538 (1600-1¼)	4600-1½ 1538 (1600-1½)	4600-3	1538 (1600-3)
CIRCLING	4600-1¼ 1538 (1600-1¼)	4600-1½ 1538 (1600-1½)	4600-3 1538 (1600-3)	4660-3 1598 (1600-3)