

NEEDLES, CALIFORNIA

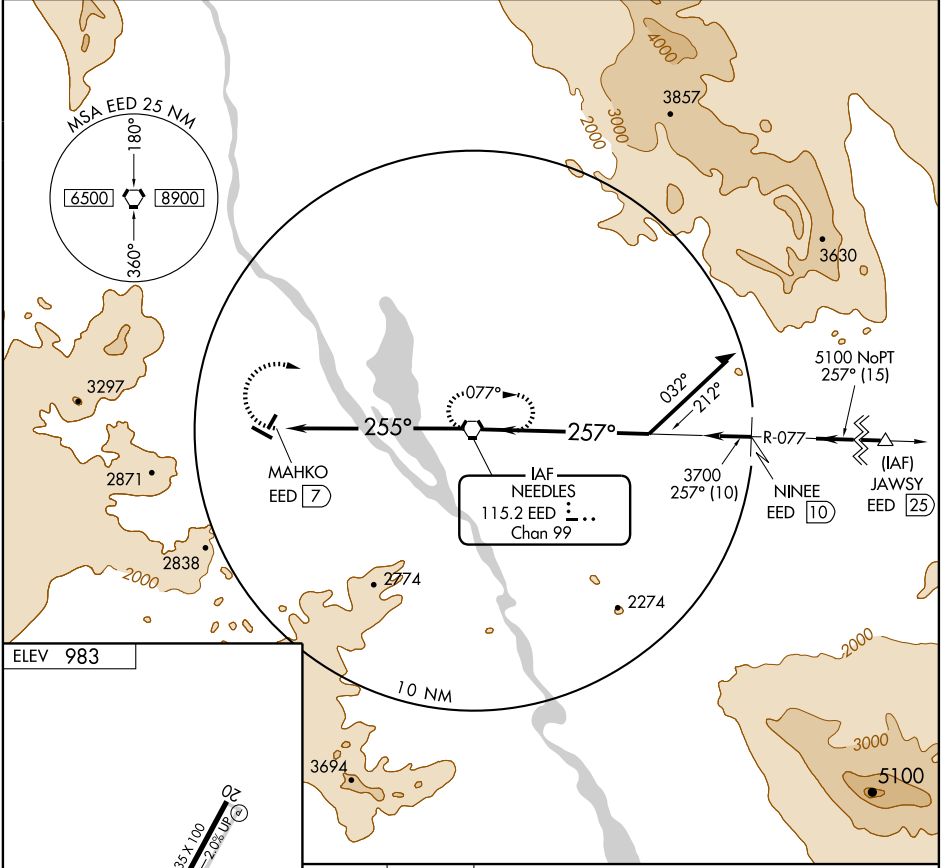
AL-543 (FAA)

VOR-A
NEEDLES (EED)

VORTAC EED 115.2 Chan 99	APP CRS 255°	Rwy Idg TDZE Apt Elev	N/A N/A 983
--	------------------------	-----------------------------	--

MISSED APPROACH: Climbing right turn to 6000 direct EED VORTAC and hold.

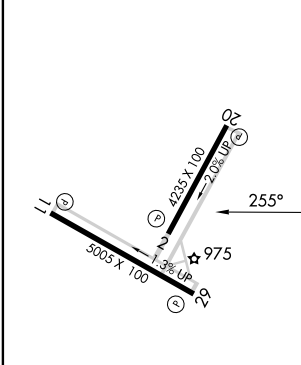
ASOS 128.325	LOS ANGELES CENTER 134.65 360.65	UNICOM 123.0 (CTAF)
------------------------	--	-------------------------------



SW-3, 05 JUN 2008 to 03 JUL 2008

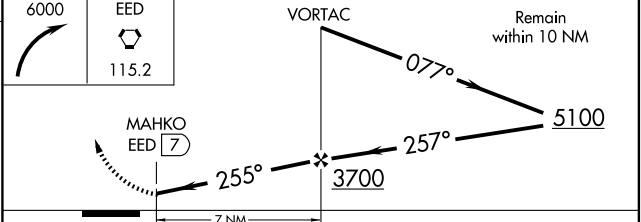
SW-3, 05 JUN 2008 to 03 JUL 2008

ELEV 983



MIRL Rws 2-20 and 11-29
REIL Rws 1 and 29

FAF to MAP 7 NM					
Knots	60	90	120	150	180
Min:Sec	7:00	4:40	3:30	2:48	2:20



CATEGORY	A	B	C	D
CIRCLING	1560-1 577 (600-1)	1600-1 617 (700-1)	1620-1¾ 637 (700-1¾)	1780-2½ 797 (800-2½)

NEEDLES, CALIFORNIA
Amdt 3 08157

34°46'N-114°37'W

NEEDLES (EED)
VOR-A