

RNAV (GPS) RWY 3

GRAND CANYON NATIONAL PARK (GCN)

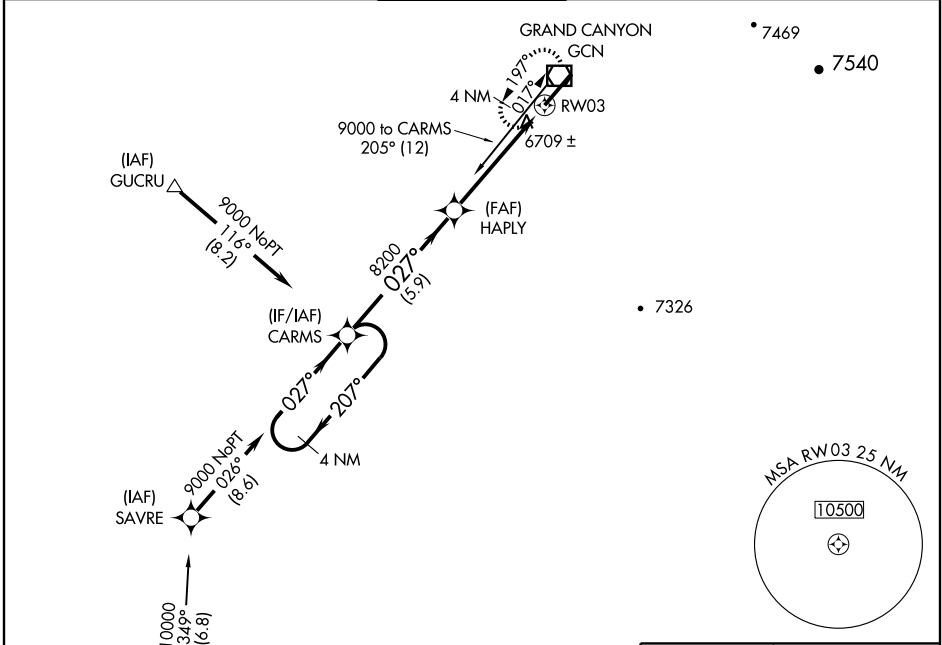
APP CRS 027°	Rwy Idg 8999
	TDZE 6556
	Apt Elev 6609

⚠ GPS or RNP-0.3 required. DME/DME RNP-0.3 NA.
⚠ NA Baro-VNAV NA below -28°C (-18°F).
 Inoperative table does not apply to LNAV Cat C.

MALS

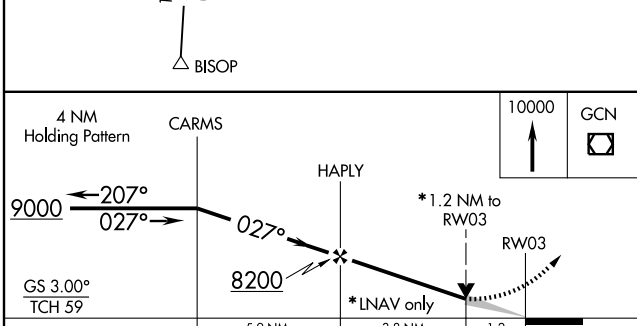
MISSED APPROACH: Climb to 10000 direct GCN
 VOR/DME and hold.

ATIS 124.3	LOS ANGELES CENTER 124.85 319.2	CANYON TOWER* 119.0(CTAF) 0	GND CON 121.9	UNICOM 122.95
----------------------	---	---------------------------------------	-------------------------	-------------------------



SW-4, 20 NOV 2008 to 18 DEC 2008

SW-4, 20 NOV 2008 to 18 DEC 2008



CATEGORY	A	B	C	D
GLS PA DA	NA			
LNAV/VNAV DA	6960-1½		404 (400-1½)	
LNAV MDA	6960-¾ 404 (400-¾)		6960-1¼ 404 (400-1¼)	
CIRCLING	7140-1½ 531 (600-1½)		7160-1½ 551 (600-1½) 7220-2 611 (700-2)	

