

LOC I-POC 110.5	APP CRS 259°	Rwy Idg TDZE Apt Elev 4151 1005 1014
---------------------------	------------------------	--

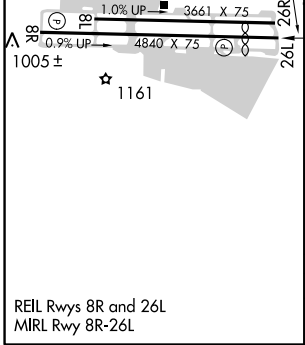
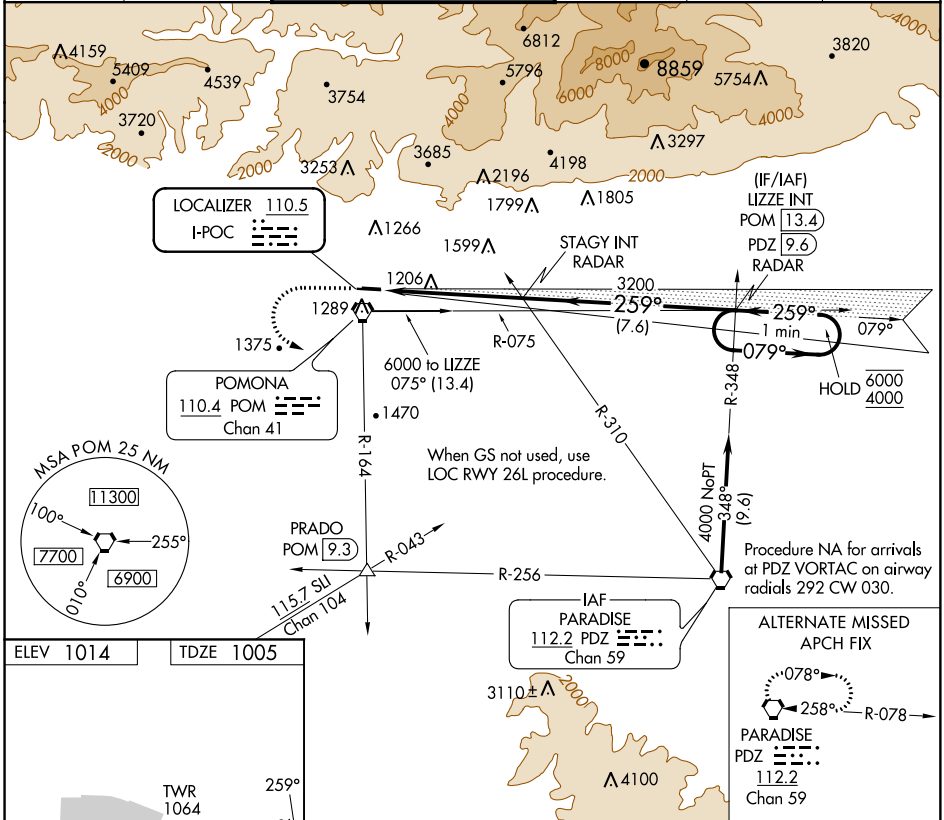
ILS RWY 26L

BRACKETT FIELD (POC)

▼ Rwy 26L helicopter visibility reduction below 3/4 SM NA.
▲ When local altimeter setting not received, use Ontario Intl altimeter setting and increase DA to 1364.

MISSED APPROACH: Climb to 2100 then climbing left turn to 4000 on POM VORTAC R-164 to PRADO INT/POM 9.3 DME.

ATIS 124.4	SOCAL APP CON 125.5 318.2	BRACKETT TOWER★ RWY 8R/26L 118.2 (CTAF)	RWY 8L/26R 133.3	GND CON 125.0	CLNC DEL 121.875	UNICOM 122.95
----------------------	-------------------------------------	--	----------------------------	-------------------------	----------------------------	-------------------------



ELEV 1014	TDZE 1005	PRADO	VGSI and ILS glidepath not coincident (VGSI Angle 3.76/TCH 18).	LIZZE INT PDZ 9.6 RADAR	One Minute Holding Pattern
2100	4000	PRADO			
1005±	POM R-164	△			
3200					
3200					
5.2 NM	7.6 NM				
CATEGORY	A	B	C	D	
S-ILS 26L	1332-1	327 (400-1)			NA

SW-3, 23 MAY 2019 to 20 JUN 2019

SW-3, 23 MAY 2019 to 20 JUN 2019