

LOC I-POC 110.5	APP CRS 259°	Rwy Idg TDZE Apt Elev	4151 1005 1014
---------------------------	------------------------	-----------------------------	---

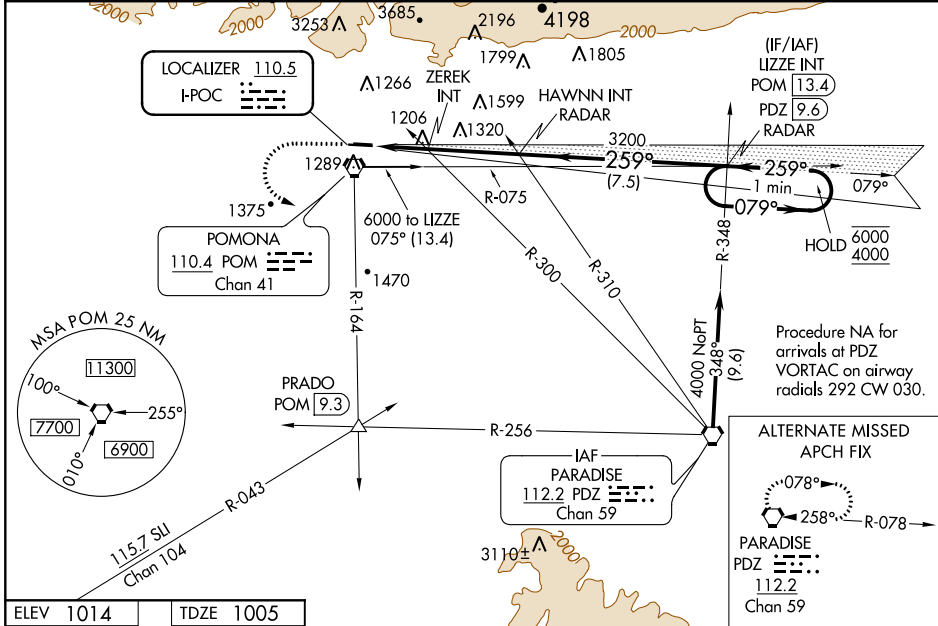
LOC RWY 26L

BRACKETT FIELD (POC)

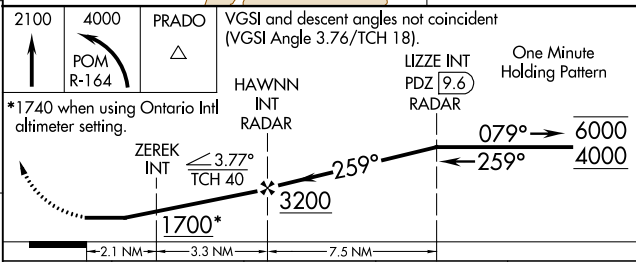
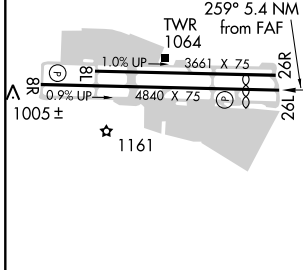
⚠ Circling to Rwy 8L NA at night. Circling NA for Cat C north of Rwy 8L-26R. When Circling to Rwy 8R at night, operational VGSI required, remain on or above VGSI glidepath until threshold. Rwy 26L helicopter visibility reduction below ¾ SM NA. When local altimeter setting not received, use Ontario Intl altimeter setting and increase all MDAs 40 feet.

MISSED APPROACH: Climb to 2100 then climbing left turn to 4000 on POM VORTAC R-164 to PRADO INT/POM 9.3 DME and hold.

ATIS 124.4	SOCAL APP CON 125.5 318.2	BRACKETT TOWER* RWY 8R/26L 118.2 (CTAF)	RWY 8L/26R 133.3	GND CON 125.0	CLNC DEL 121.875	UNICOM 122.95
----------------------	-------------------------------------	--	----------------------------	-------------------------	----------------------------	-------------------------



ELEV 1014	TDZE 1005
-----------	-----------



CATEGORY	A	B	C	D
S-LOC 26L	1700-1 695 (700-1)		1700-2 695 (700-2)	NA
C CIRCLING	1700-1 686 (700-1)		1760-2¼ 746 (800-2¼)	NA
ZEREK MINIMUMS (DUAL VOR RECEIVERS REQUIRED)				
S-LOC 26L	1460-1 455 (500-1)		1460-1¾ 455 (500-1¾)	NA
C CIRCLING	1680-1 666 (700-1)		1760-2¼ 746 (800-2¼)	NA

REIL Rwy 8R and 26L
MIRL Rwy 8R-26L

FAF to MAP 5.4 NM

Knots	60	90	120	150	180
Min:Sec	5:24	3:36	2:42	2:10	1:48

SW-3, 23 MAY 2019 to 20 JUN 2019

SW-3, 23 MAY 2019 to 20 JUN 2019