

VORTAC POM <b>110.4</b> Chan 41	APP CRS <b>344°</b>	Rwy Idg TDZE Apt Elev	<b>N/A</b> <b>N/A</b> <b>1011</b>
---------------------------------------	------------------------	-----------------------------	---

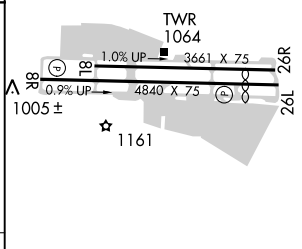
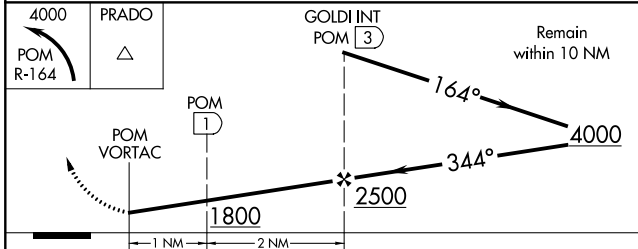
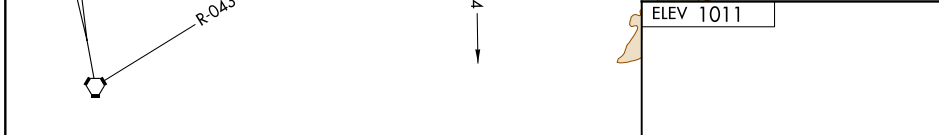
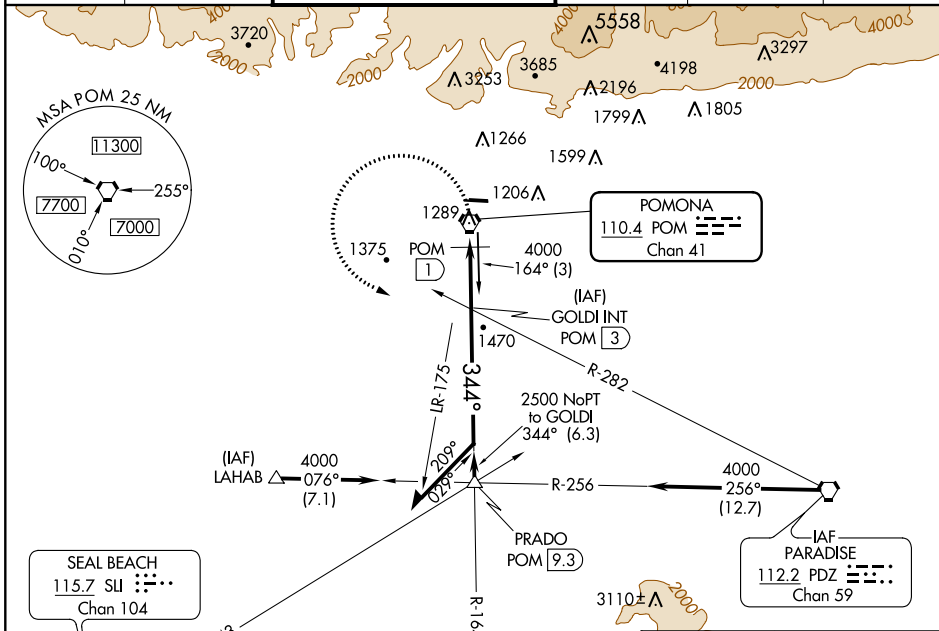
# VOR or GPS-A

BRACKETT FIELD (POC)

**⚠** When local altimeter setting not received, use Ontario Intl altimeter setting and increase all MDA 40 feet and visibility Cat C ¼ mile. Night landing: Rwy 8L NA, Rwy 8R operational VGSI required, remain on or above VGSI glidepath until threshold. Helicopter visibility reduction below 1 SM not authorized.

MISSED APPROACH: Climbing left turn to 4000 via POM R-164 to PRADO INT.

ATIS <b>124.4</b>	SOCAL APP CON <b>125.5 318.2</b>	BRACKETT TOWER★ RWY 8R/26L <b>118.2</b> (CTAF)	RWY 8L/26R <b>133.3</b>	GND CON <b>125.0</b>	CLNC DEL <b>121.875</b>	UNICOM <b>122.95</b>
----------------------	-------------------------------------	--	----------------------------	-------------------------	----------------------------	-------------------------



CATEGORY	A	B	C	D
CIRCLING	1800-1 789 (800-1)	1800-1¼ 789 (800-1¼)	1800-2¼ 789 (800-2¼)	NA
DME MINIMUMS				
CIRCLING	1640-1 629 (700-1)		1680-1¾ 669 (700-1¾)	NA

REIL Rwy 8R and 26L  
MIRL Rwy 8R-26L

SW-3, 23 MAY 2019 to 20 JUN 2019

SW-3, 23 MAY 2019 to 20 JUN 2019