

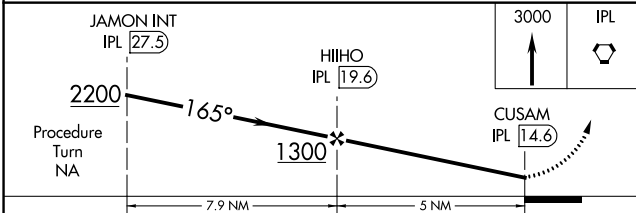
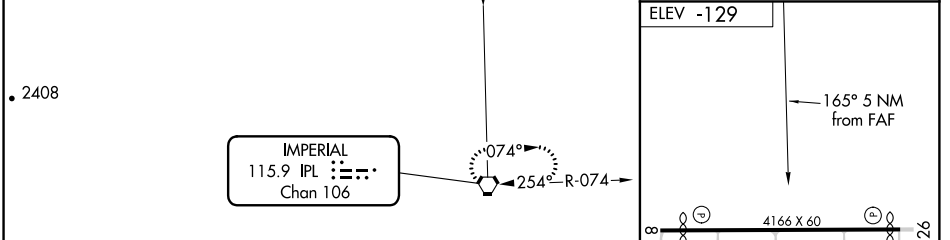
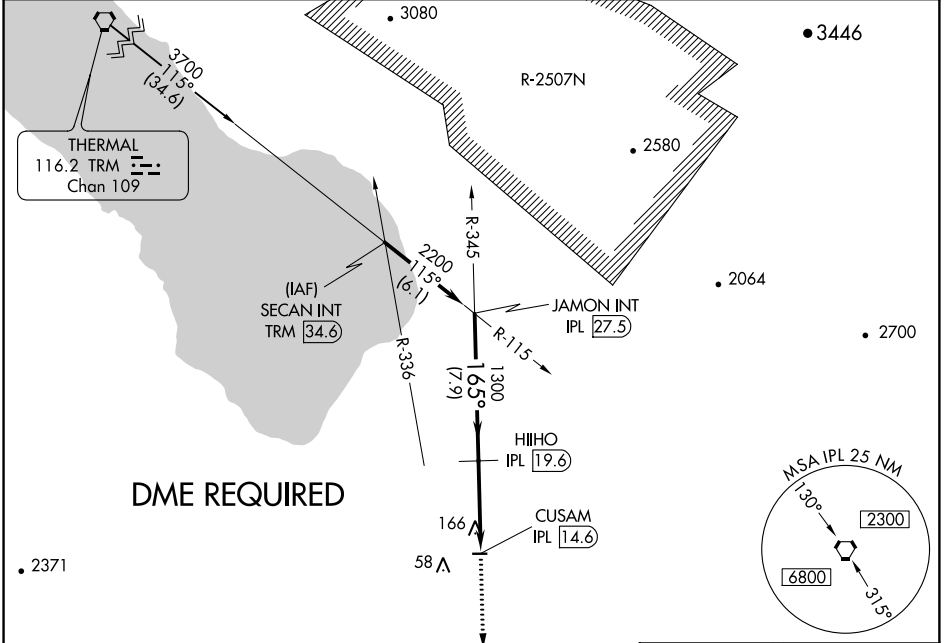
VORTAC IPL <b>115.9</b> Chan <b>106</b>	APP CRS <b>165°</b>	Rwy Idg TDZE Apt Elev	<b>N/A</b> <b>N/A</b> <b>-129</b>
---	------------------------	-----------------------------	---

**VOR-B**  
BRAWLEY MUNI (BWC)

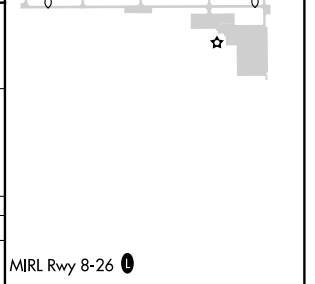
**▼** Use Imperial County altimeter setting.  
**▲** NA DME Required. Circling Rwy 8 NA at night.

MISSED APPROACH: Climb to 3000 direct IPL VORTAC and hold.

IMPERIAL COUNTY ASOS <b>132.175</b>	LOS ANGELES CENTER <b>128.6 291.7</b>	CTAF <b>122.9</b>
--	--	----------------------



CATEGORY	A	B	C	D
CIRCLING	560-1	689 (700-1)		NA



SW-3, 23 MAY 2019 to 20 JUN 2019

SW-3, 23 MAY 2019 to 20 JUN 2019