

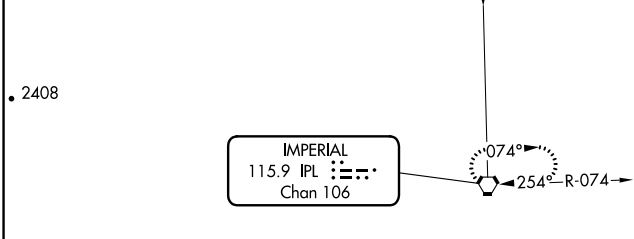
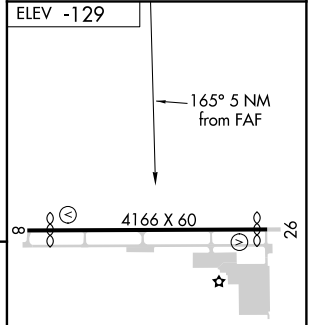
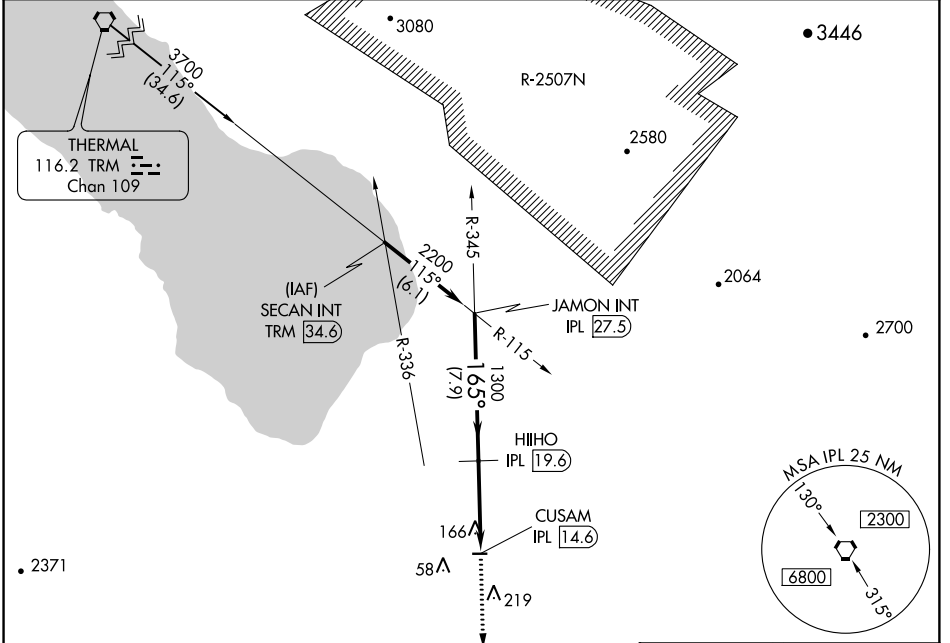
VORTAC IPL 115.9 Chan 106	APP CRS 165°	Rwy Idg TDZE Apt Elev	N/A N/A -129
---	------------------------	-----------------------------	---

VOR/DME-B
BRAWLEY MUNI (BWC)

▼ Use Imperial County altimeter setting. **▲** NA

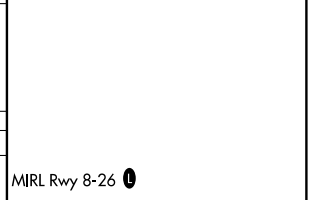
MISSED APPROACH: Climb to 3000 direct IPL VORTAC and hold.

IMPERIAL COUNTY ASOS 132.175	LOS ANGELES CENTER 128.6 291.7	CTAF 122.9 0
--	--	------------------------



JAMON INT IPL 27.5	HIIHO IPL 19.6	3000 IPL	CUSAM IPL 14.6
Procedure Turn NA			
7.9 NM		5 NM	

CATEGORY	A	B	C	D
CIRCLING	560-1 689 (700-1)		NA	



SW-3, 07 DEC 2017 to 04 JAN 2018

SW-3, 07 DEC 2017 to 04 JAN 2018